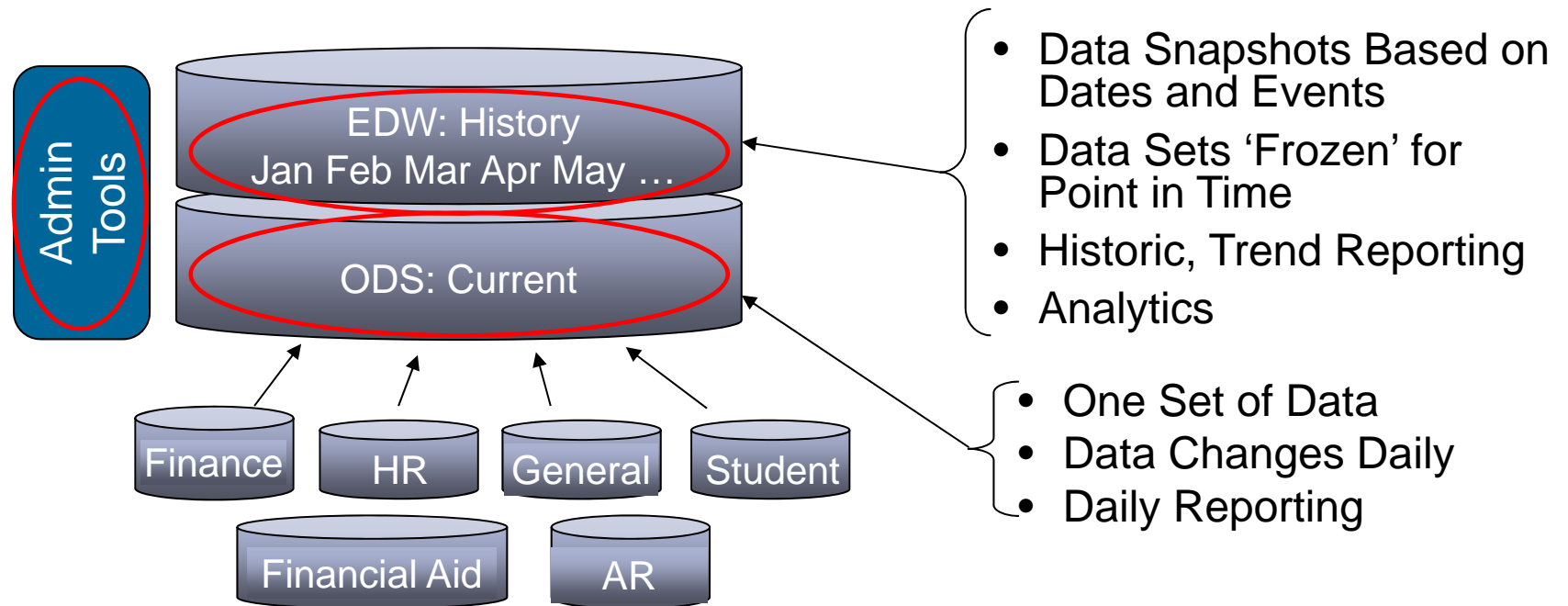


Banner ODS Overview

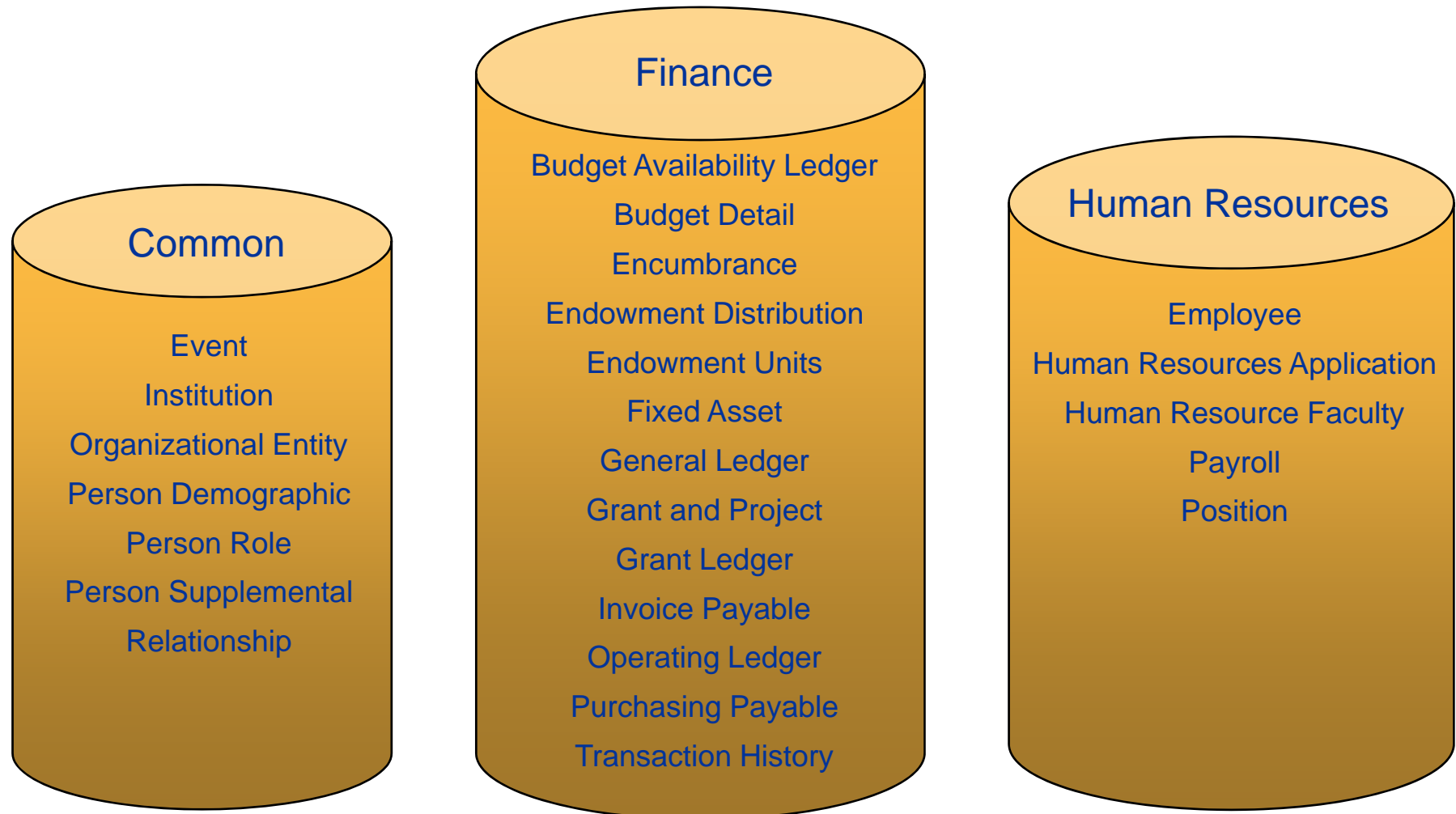
Banner ODS Overview

- Opportunity for More Consistent Reporting Results.
 - Common Data Source
 - Common Business Concepts
- Banner Operational Data Store (ODS): Ad-hoc querying and daily reporting.
- Enterprise Data Warehouse: Historic, trend reporting and analytics.



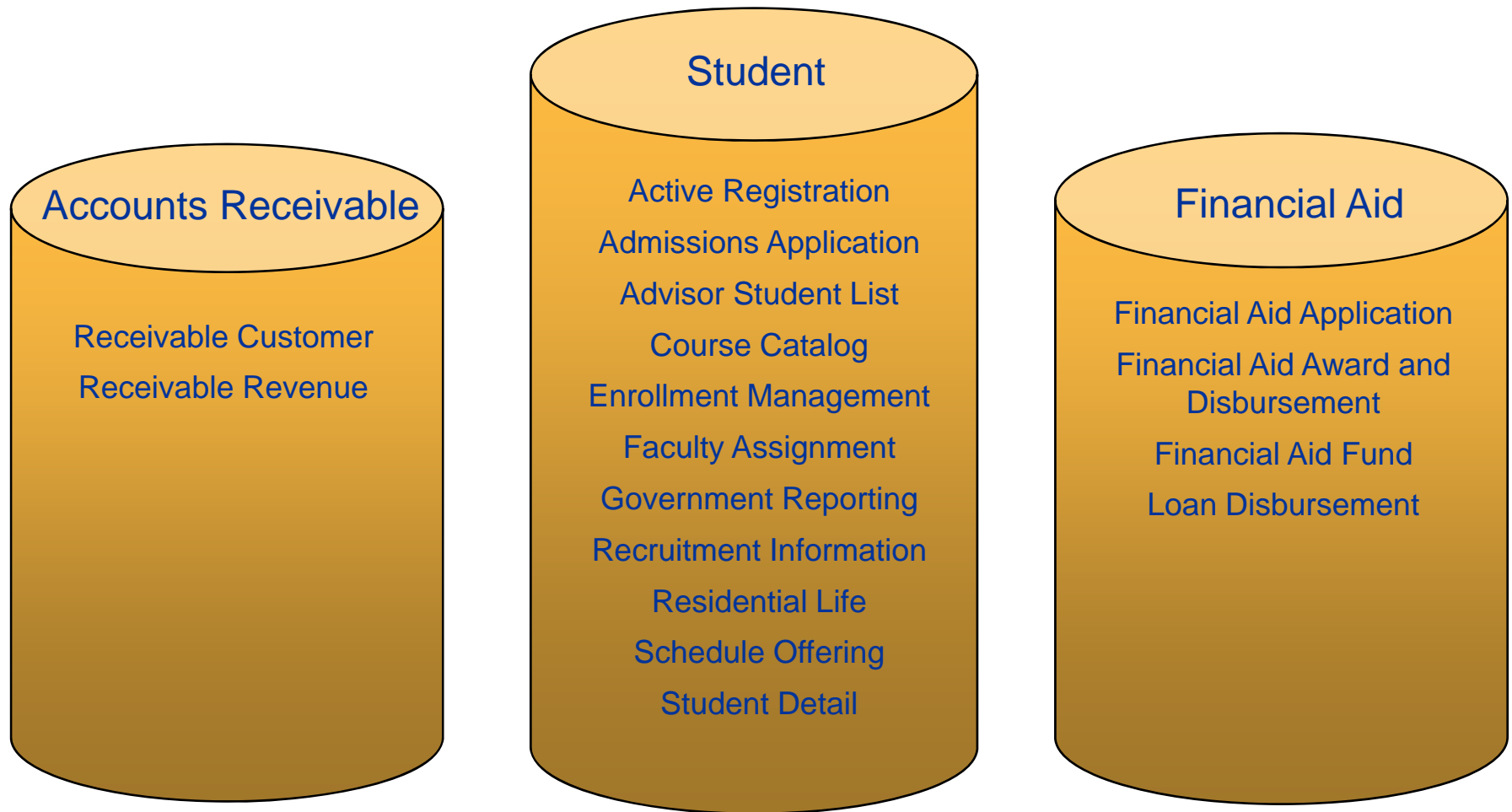
Banner ODS Overview

Business Concepts



Banner ODS Overview

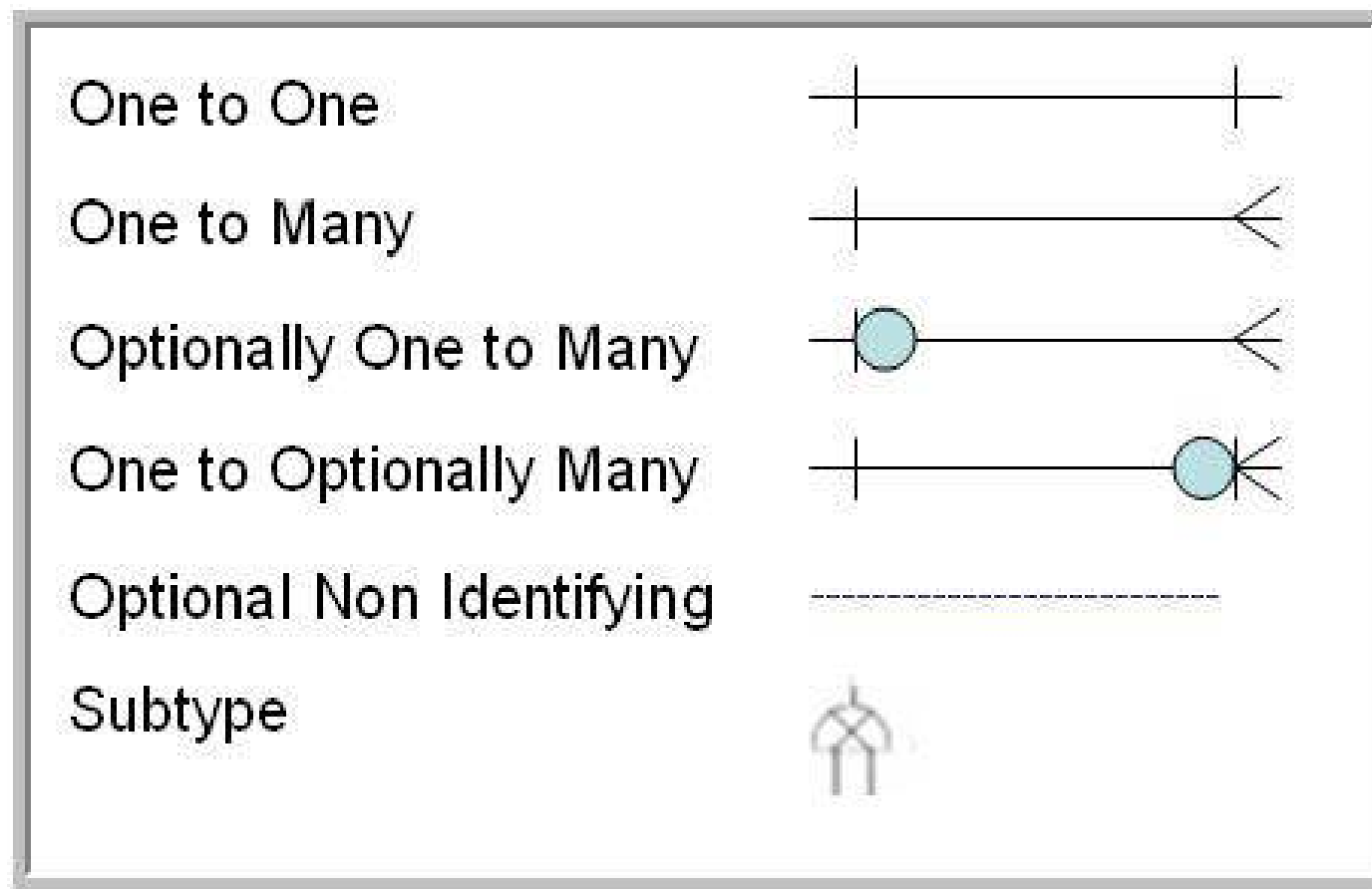
Business Concepts



Business Concept Diagrams



Business Concept Diagram Relationships



Primary Key (PK) and Foreign Key (FK)

Primary Key

- A column or columns that uniquely identify a row or rows in a reporting view.

Foreign Key

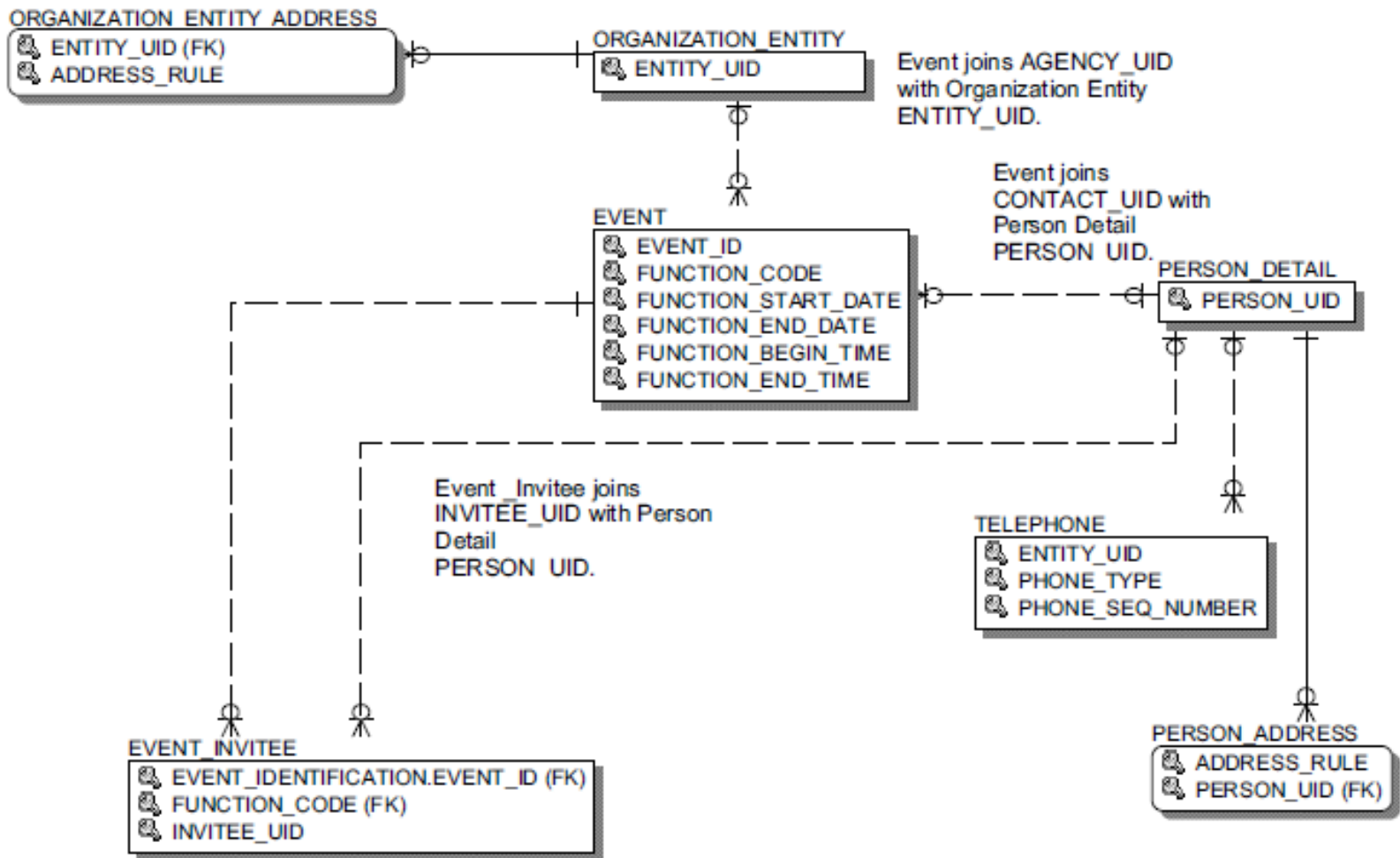
- Identifies the row or rows that are common between reporting views.

Business Concept Diagrams

Common



Event



Content and Uses

Event

Content

- Shows basic event data such as location, function details, contact persons from the Event (SLAEVNT) Banner form.

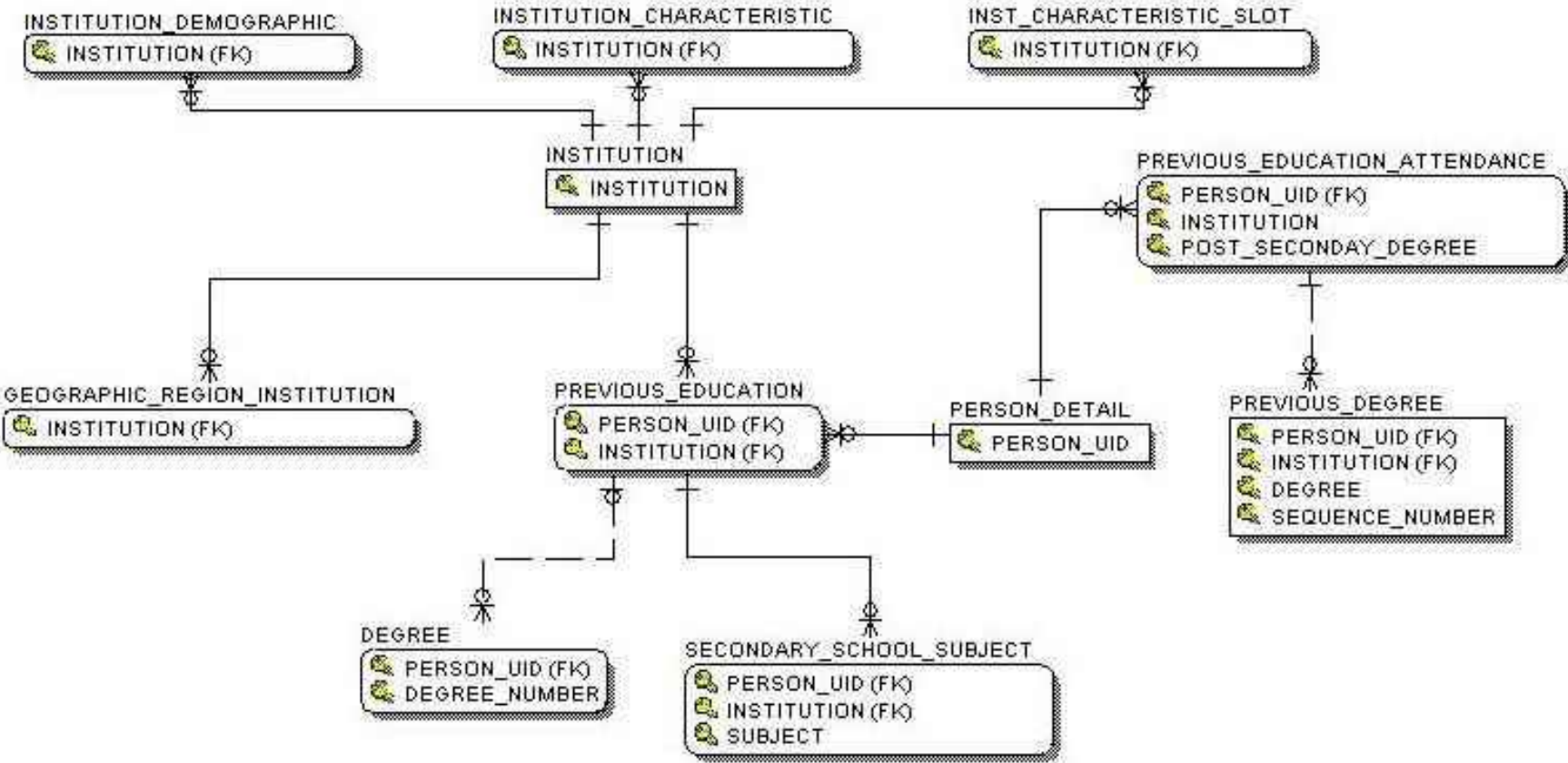
Uses

- To report on events such as Sport Camps or Raider Orientation and Registration.
- To report on members attending IT training classes.

Primary Data Sources

- SPRIDEN, SLBEVNT, SSRMEET, GEBFUNC, GERFCON

Institution



Content and Uses

Institution

Content

- Shows information associated with high schools, colleges, and universities as defined on the Source/Background Institutional Code Validation (STVSBGI) and Source/Background Institutional Base (SOASBGI) forms. Related views can provide associated students, employees, institution demographics and characteristics.

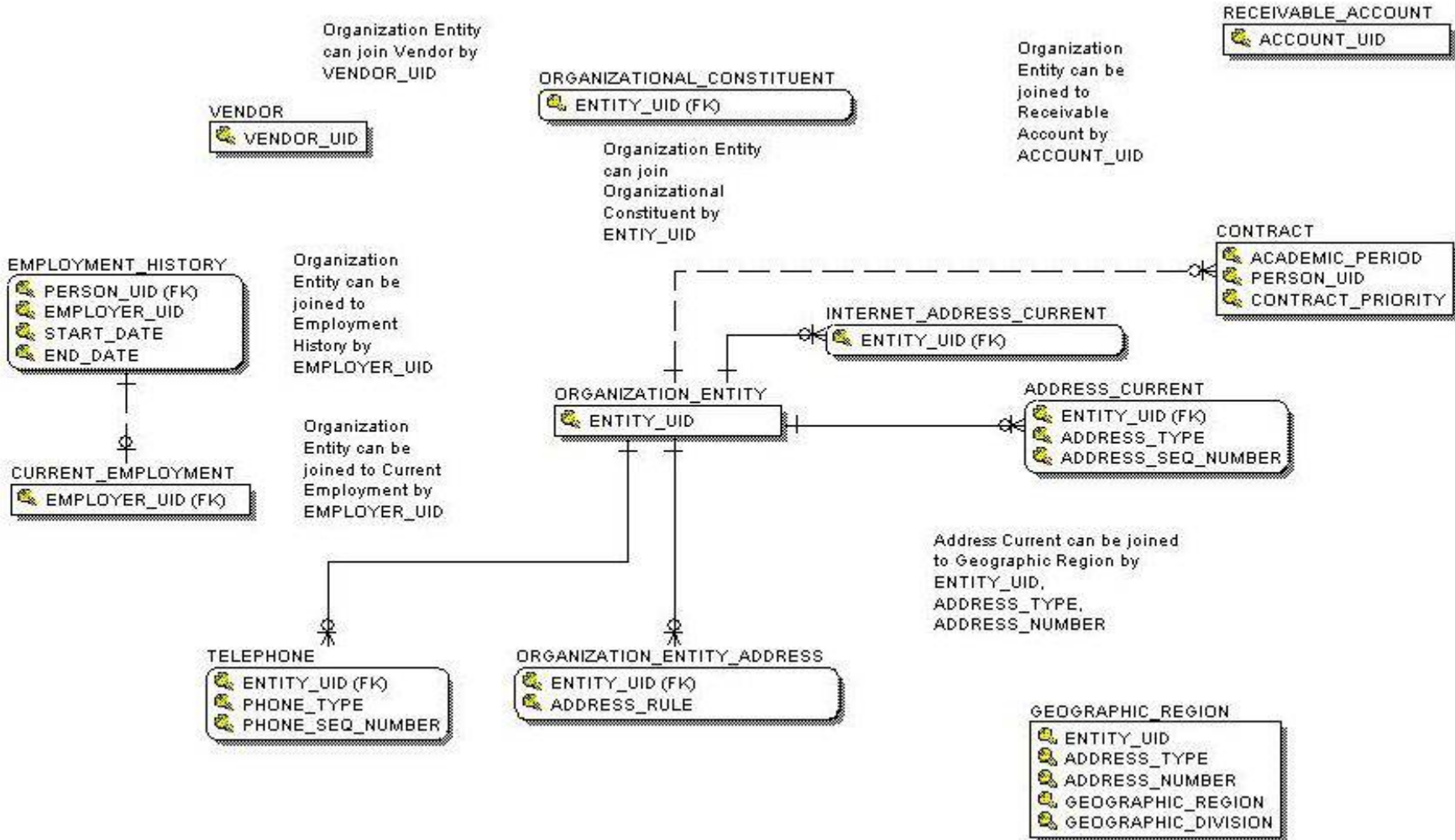
Uses

- To report on characteristics of institutions that may be associated with credentialed employees such as colleges and universities.
- To report on previous education (high schools and universities) for students.

Primary Data Sources

- SOBSBGI, SORBCNT

Organization Entity



Content and Uses

Organization Entity

Content

- Shows non-person information for entities identified in various Banner modules such as Finance vendors, other organizations, and third party contract authorizations.

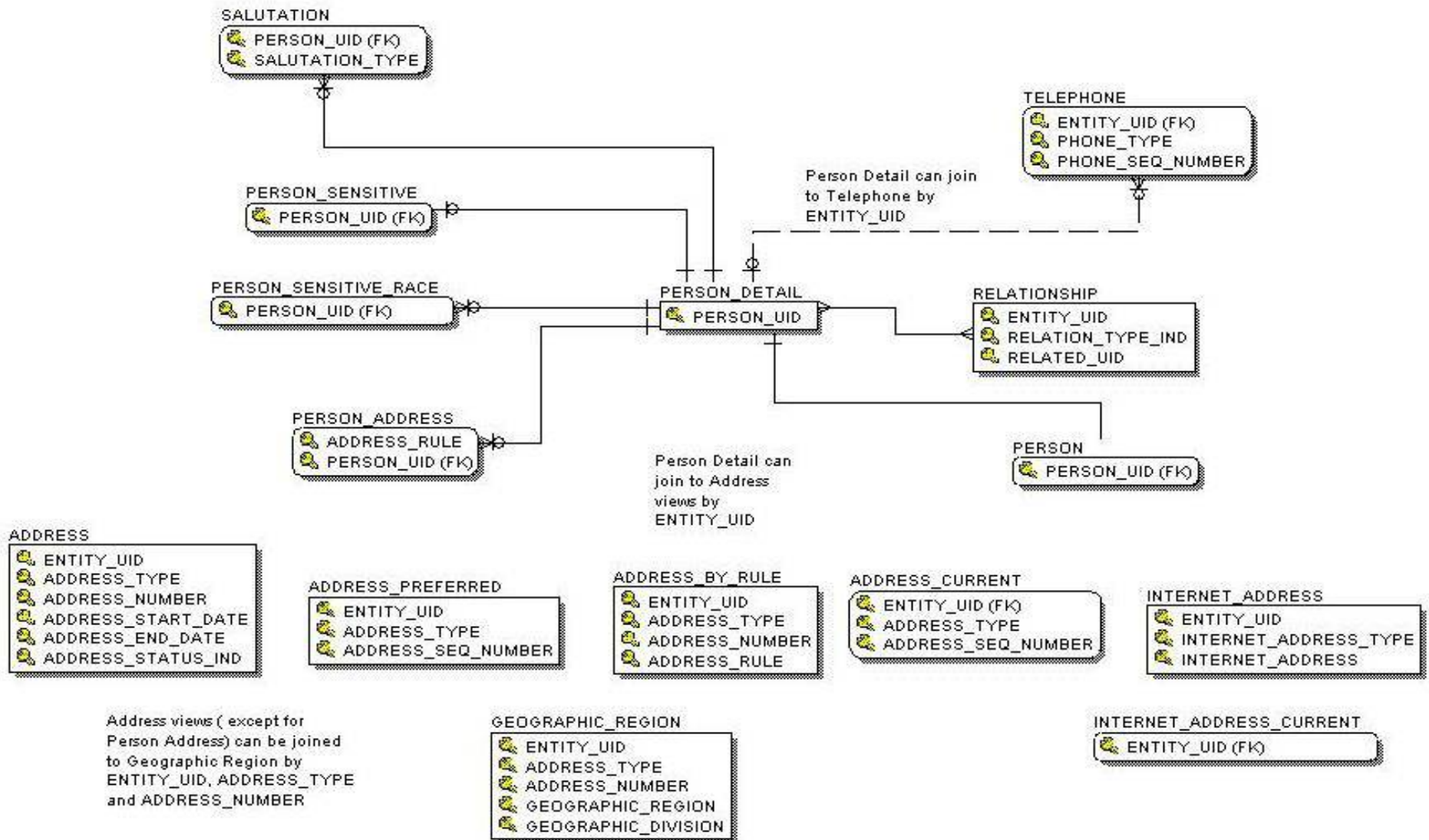
Uses

- To report on the employers with whom the institution's employees have had a prior work association.
- To report on vendors, third-party contract entities, receivable accounts, or non-person constituents.

Primary Data Sources

- SPRADDR, GOREMAL, SPRIDEN, SPRTELE, SPBPERS

Person Demographic



Content and Uses

Person Demographic

Content

- Primarily used to show location/demographic data, and some general biographic data, associated with employees and other persons. This is the single business concept that includes all the potential methods of address retrieval.

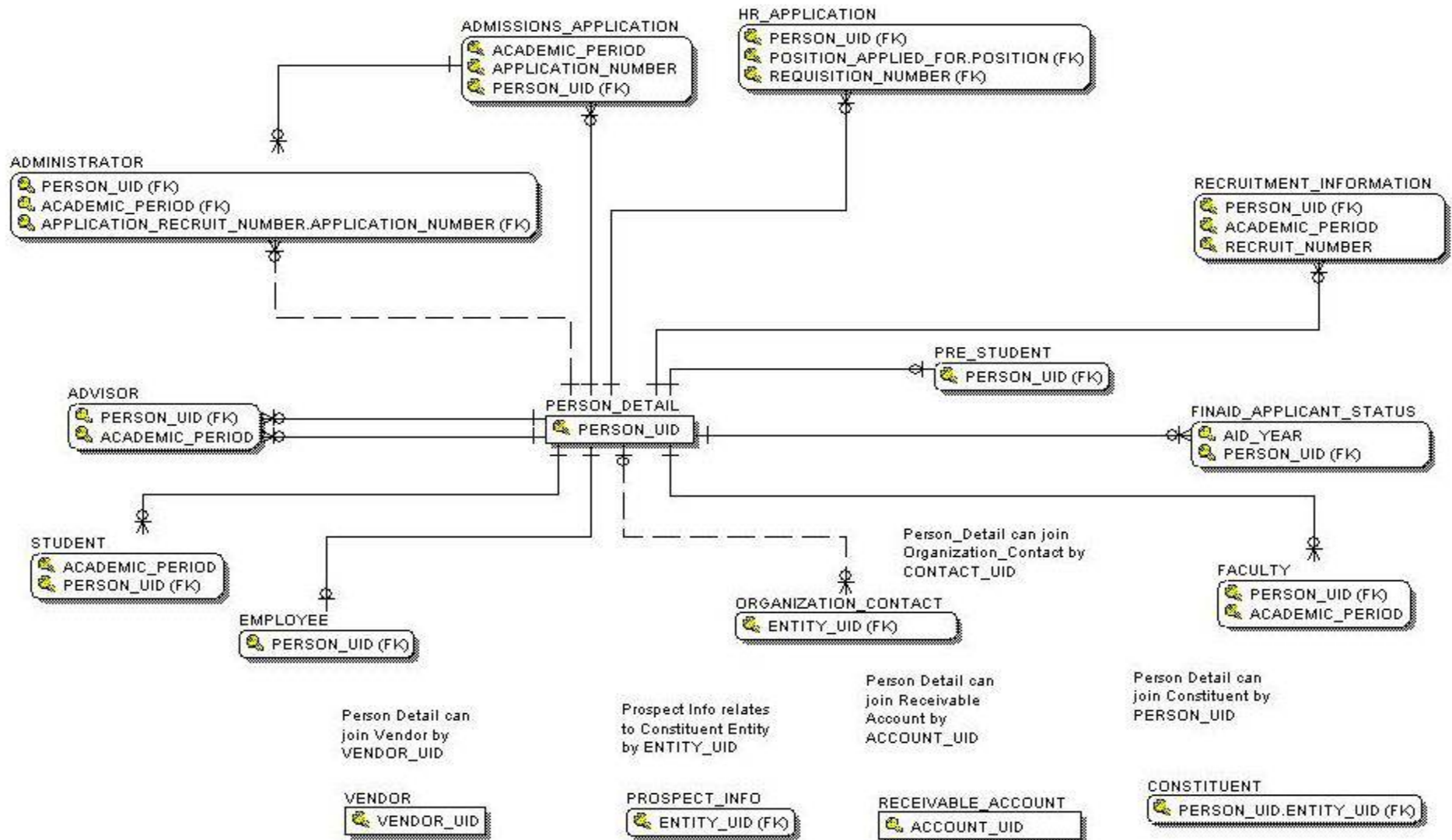
Uses

- To report on characteristics of person entities without regard to their role in Banner, such as gender or ethnicity ratios, geographic location concentrations.
- To create an audit report for address data entry standards.
- This is the single Business Concept Diagram that offers all available address reporting views.

Primary Data Sources

- SPRIDEN, SPBPERS

Person Role



Content and Uses

Person Role

Content

- This business concept is the only grouping of all potential roles a person may hold throughout every business area of the institution. It joins core module data to the general person detailed data.

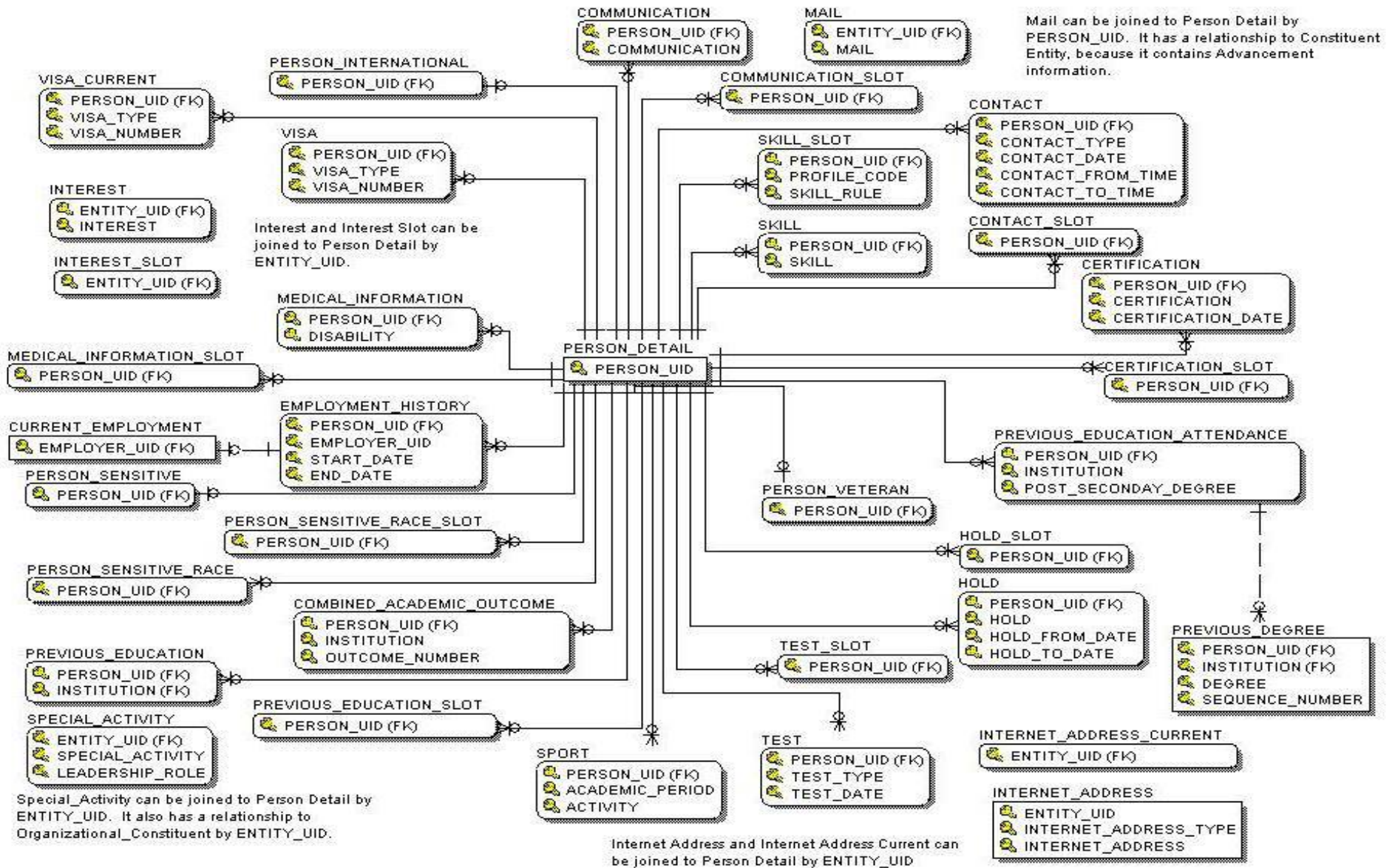
Uses

- To list horizontally in a single record line all the roles an entity holds throughout the institution.
- To list other areas of the university in which employees, students, faculty may have additional records or may be recently active; for example employees who are also students, or employees who have donated to the institution, or faculty who may serve a role with another organization, e.g. contact person, or as a vendor for various reimbursements, etc.

Primary Data Sources

- SPBPERS, GOBINTL, GOREMAL, SPRIDEN, SPRMEDI

Person Supplemental



Content and Uses

Person Supplemental

Content

- A comprehensive gathering of person data not necessarily limited within a single business area of the institution. Although components of the data may be primarily used in one enterprise module, the nature of the data deems it as shared data.

Uses

- To report comprehensively on person entities without regard to their current roles in Banner.
- To report Visa status or international information for all person entities.
- To report employment data for constituents who are persons. (This is not the same as the employee data housed in the Banner HR module.)

Primary Data Sources

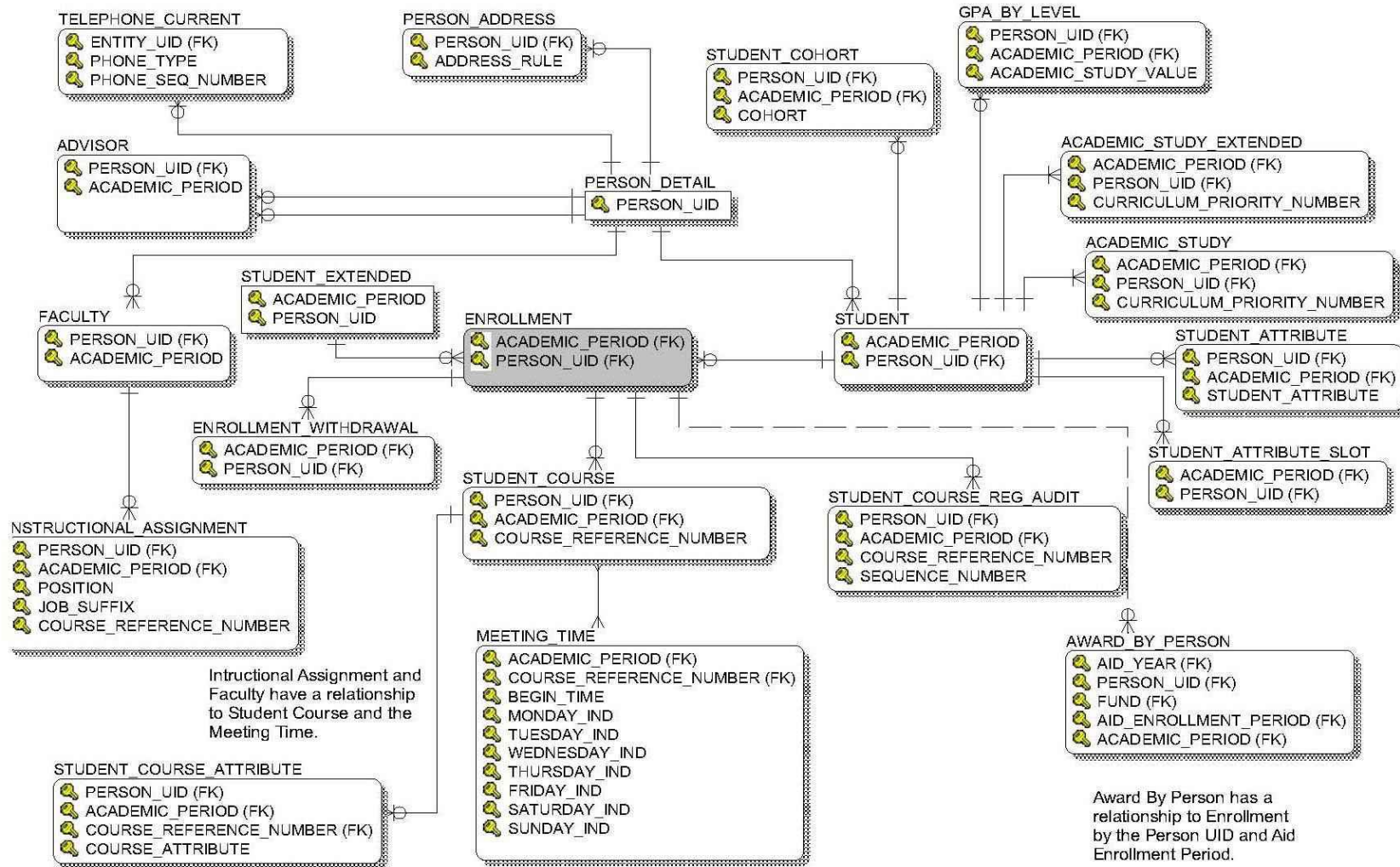
- SPBPERS, GOBINTL, GOREMAL, SPRIDEN, SPRMEDI

Business Concept Diagrams

Student



Active Registration



Content and Use

Active Registration

Content

- Data includes information about students enrolled in specified academic periods, their academic study details, course registration and scheduling information and select demographics.

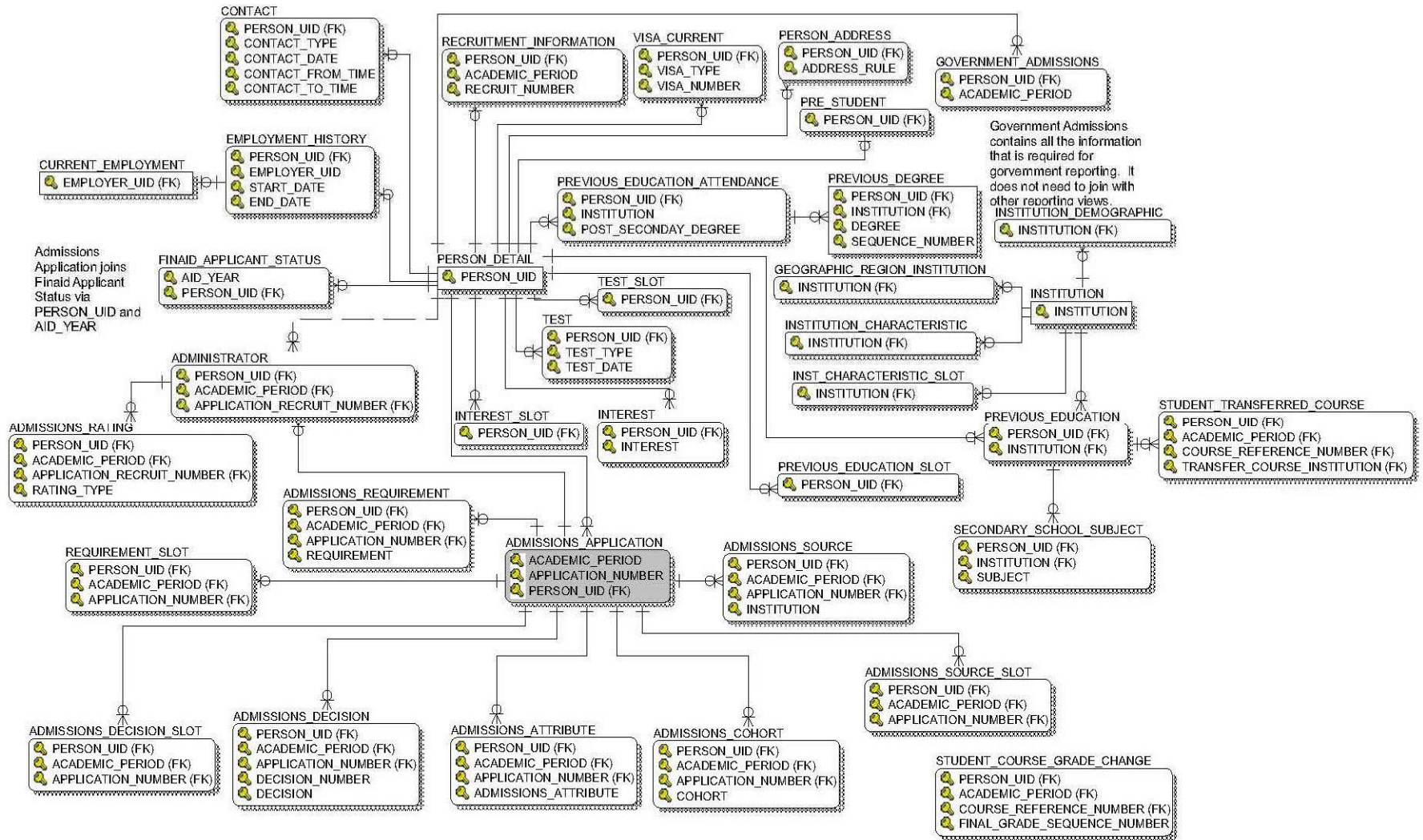
Use

- Review student enrollments by academic period and program attributes.
- Track student course registration activity.
- Retrieve a list of students registered in courses with missing scheduling details.

Primary Data Sources

- SFBETRM, SHRTTRM

Admissions Application



Content and Uses

Admissions Application

Content

- Data includes admissions application details, status and decisions, requested academic study programs, applicant demographics, test scores and previous education background information.

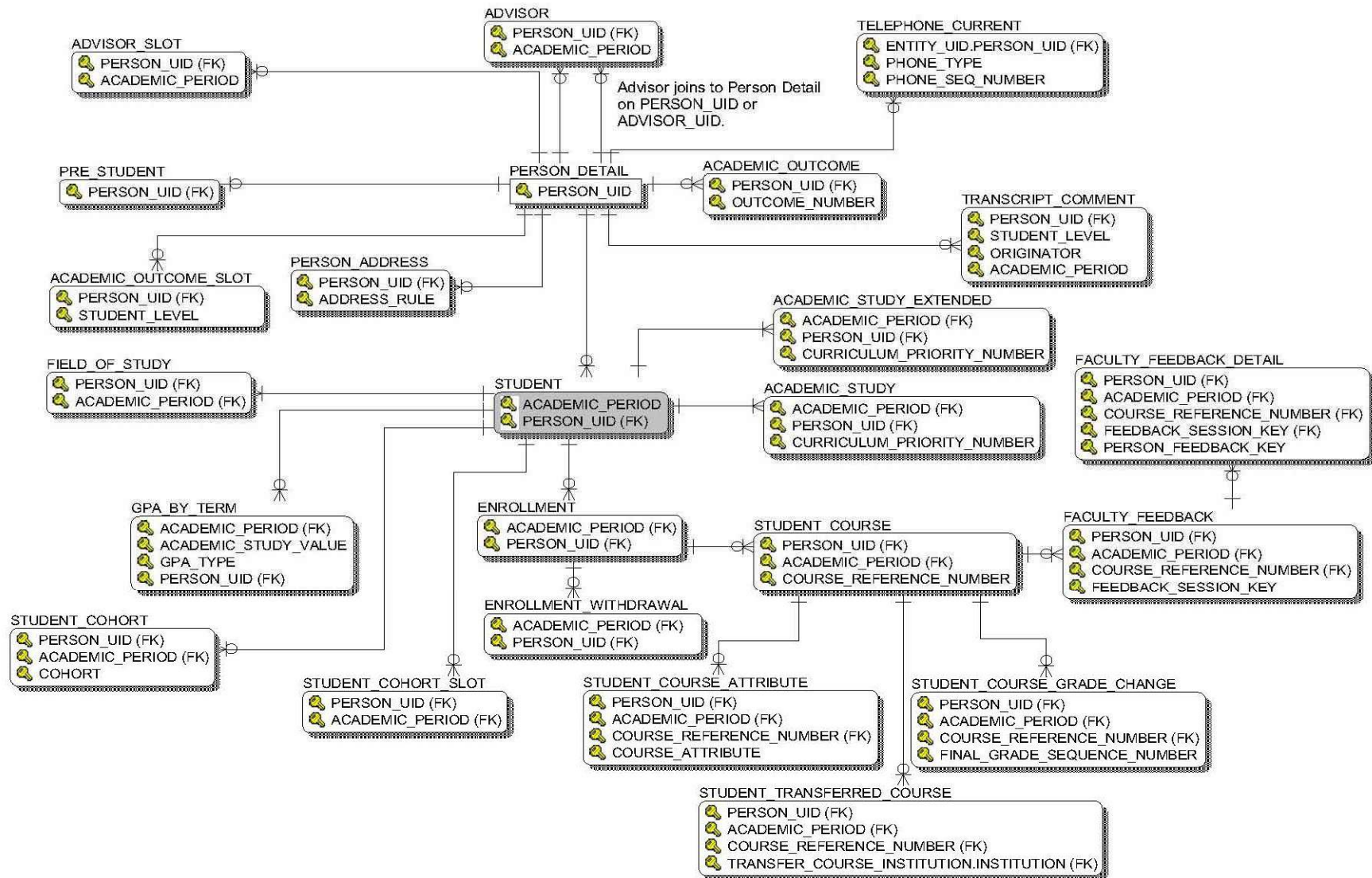
Uses

- Identify admissions applications that are complete and ready for review.
- Monitor application status and review admission application details.
- Compile details of applicants matching a set of criteria for further review.
- Track admissions application decisions by college and or department.

Primary Data Sources

- SARADAP, SABSUPL, SORLFOS, SORLCUR, SGRADVR, SARRSRC, SMRPRLE

Advisor Student List



Content and Uses

Advisor Student List

Content

- Data includes advisor assignments and attributes, student status, academic study and enrollment details, course registrations and demographics.

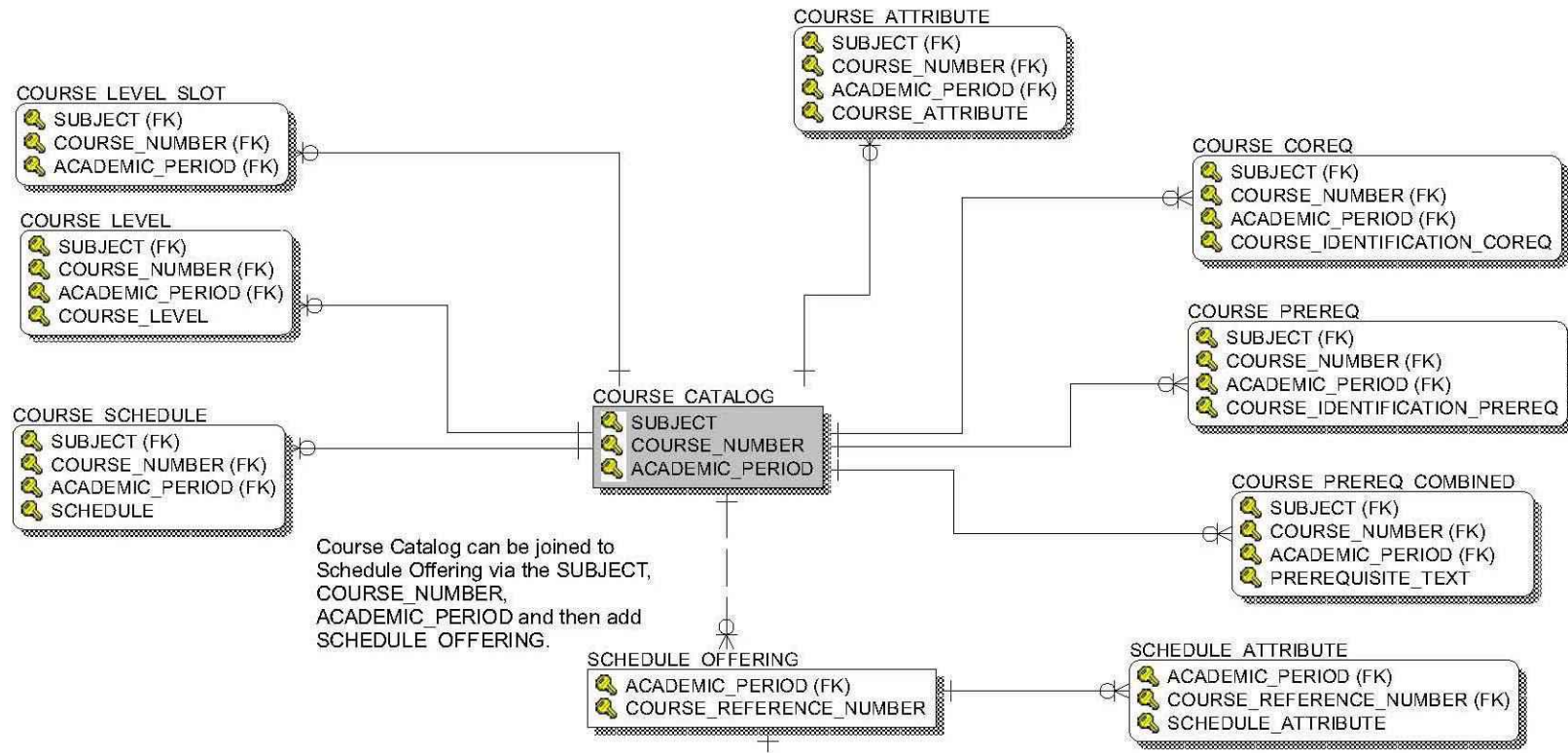
Uses

- Retrieve information for specific advisees when meeting with a group of advisees.
- Identify a group of students that fit a set of criteria to contact that group of students, such as:
 - Students within an advising type responsibility
 - Students from a geographic region (Nation, State/Province)
 - Students who are international students
 - Students in academic difficulty
 - Students receiving financial assistance
- Review the assignments made to a group of advisors.

Primary Data Sources

- SGBSTDN, SHRTTRM, SFRETRM, SPRIDEN, SPBPERS, SGRVETN

Course Catalog



Content and Uses

Course Catalog

Content

- Data includes course identification, section, status, college and department, version, type, credits, title, level, enrollment, delivery type, attributes, prerequisites, and co-requisites.

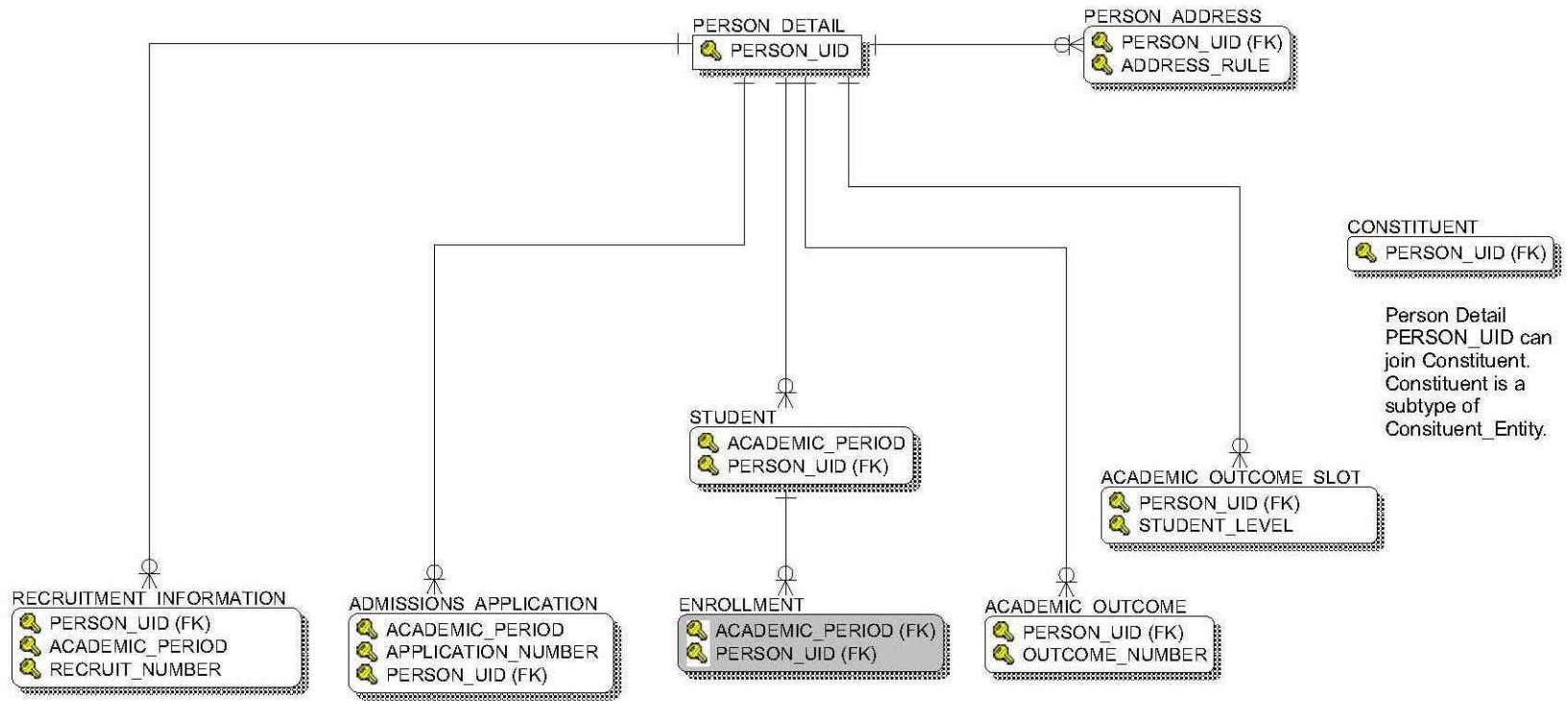
Uses

- Retrieve course inventory for use in schedule planning.
- Identify sections with no instructor assigned.
- Audit the instructional methods employed.

Primary Data Sources

- SCBCRSE, SCBSUPP, SCRGMOD

Enrollment Management



Content and Uses

Enrollment Management

Content

- Data includes demographic, address, recruitment, admissions, registration, and outcomes (the student can be followed throughout their entire history at the institution).

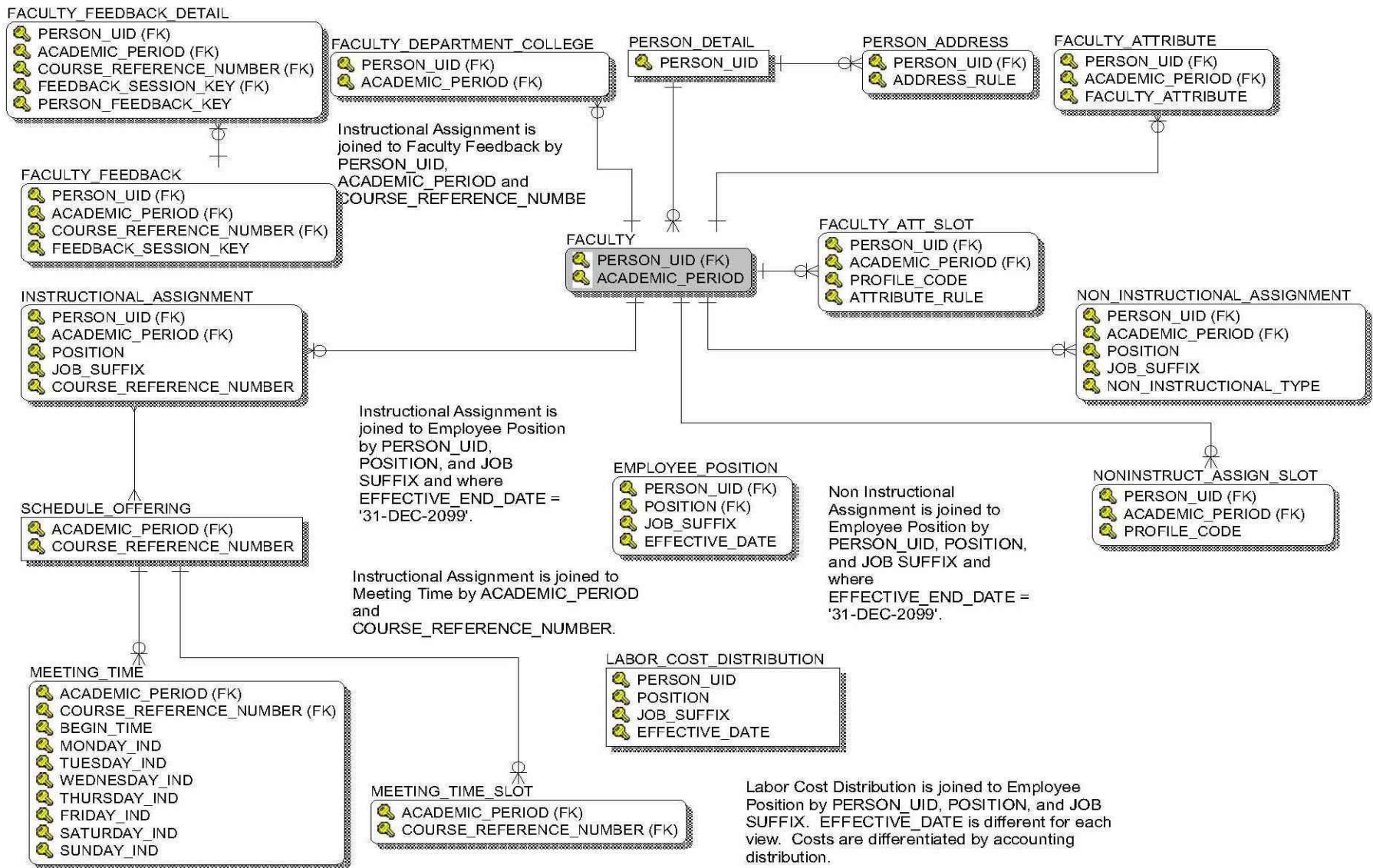
Uses

- Produce retention analyses.
- Generate the prospect/recruit/admit/enroll funnel.

Primary Data Sources

- SFBETRM, SHRTTRM

Faculty Assignment



Content and Uses

Faculty Assignment

Content

- Data includes faculty demographic, address, position title, tenure, sabbatical, appointment, home department, years of experience, instructional and non-instructional assignments, section meeting times, labor cost distribution and attributes.

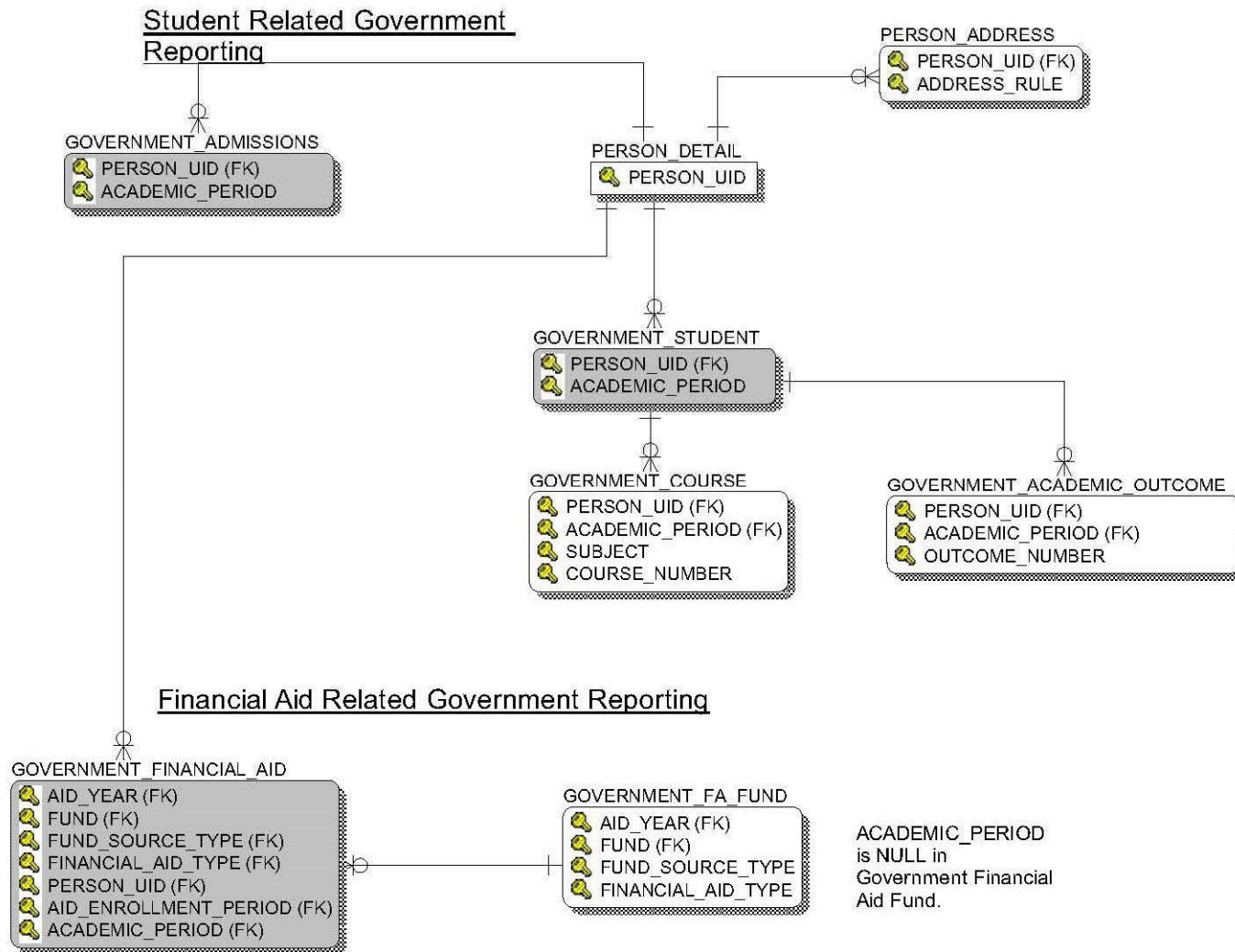
Uses

- Compile faculty teaching assignments.
- Verify course instructors.

Primary Data Sources

- PERBFAC or SIBFACD, SIBINST, SIRDPCCL, SIRICNT, SIRASGN, NBRJOBS

Government Reporting



Content and Uses

Government Reporting

Content

- Data includes demographic, address, admissions, financial aid and financial aid funds, student, course, outcomes specifically directed at government reporting.

Uses

- Compile application statistics.
- Produce the Common Data Set.
- Produce state reports.
- Monitor student athletes.

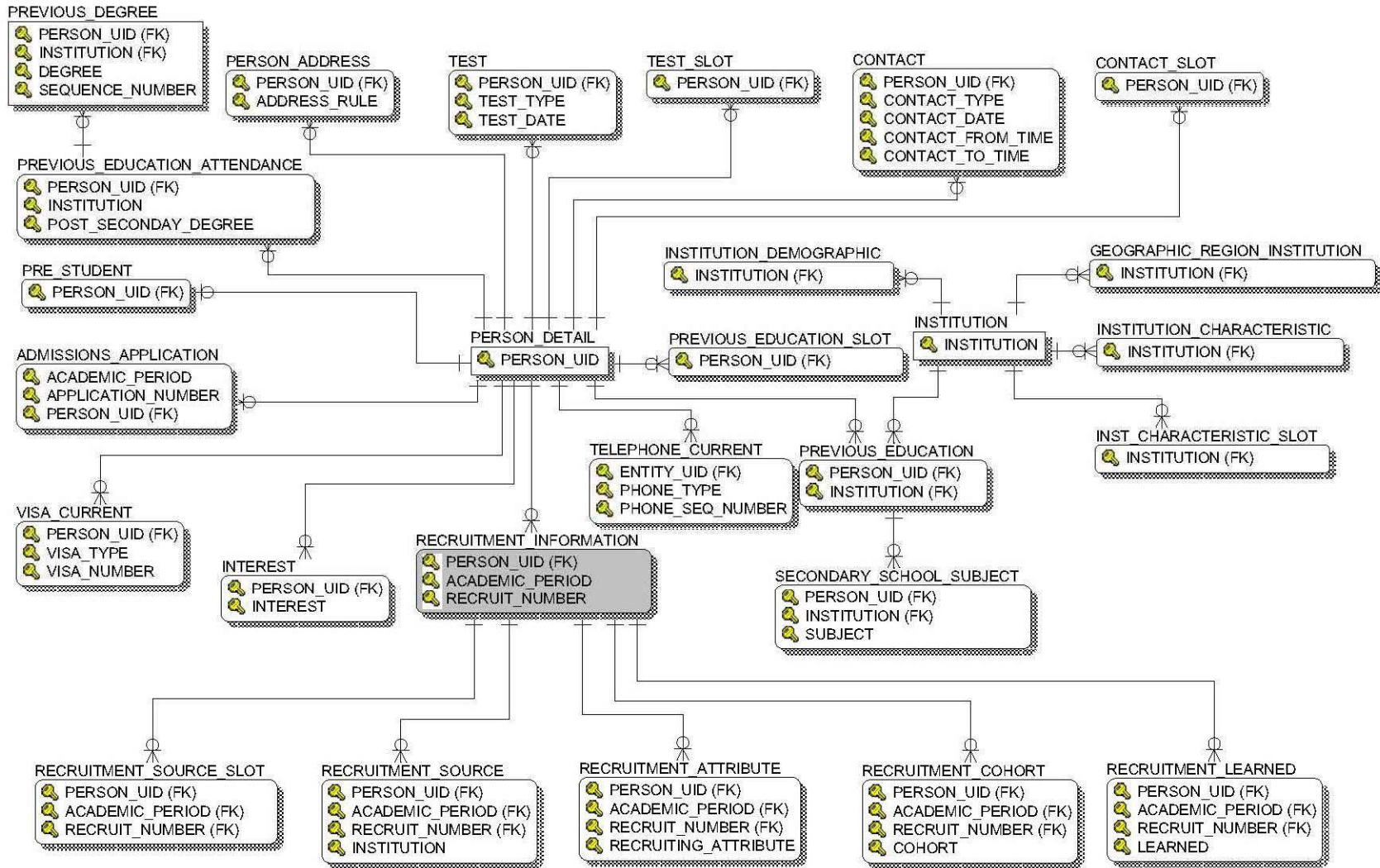
Content and Uses

Government Reporting (continued)

Primary Data Sources

- Student
 - SFBETRM, SORLCUR, SGRSPRT, SORLFOS, SGBSTDN, SPBPERS, SPRADDR, GOBINTL, GORVISA, SGRCHRT, SHRLGPA, SPRIDEN, SPRMEDI, SMRPRLE
- Financial Aid
 - RPRATRM, RPRAWRD, SGRSPRT, RFRBASE, RPRADSB, SPBPERS, SGBSTDN, SORLCUR, ROBINST, SPRIDEN, SCRCHRT
- Admissions
 - SARADAP, SABSUPL, SPBPERS, SORLCUR, SARCHRT, SORPCOL, SORDEGR, SORHSCH, SMRPRLE, SORTEST, SHRLGPA, SORHSCH, SORLFOS, SPRIDEN, SPBPERS

Recruitment Information



Content and Uses

Recruitment Information

Content

- Data includes demographic, address, test, pre-student, visa, interest, contact, recruitment source, attribute, cohort, and admissions application.

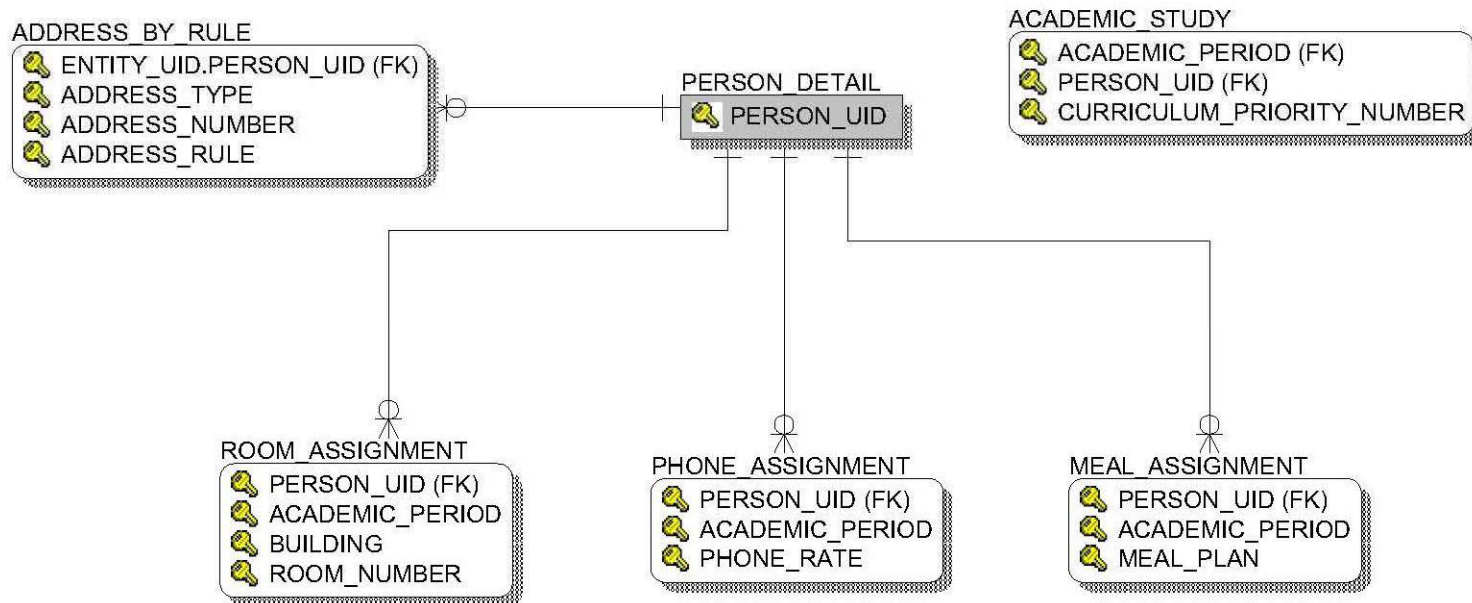
Uses

- Track recruitment.

Primary Data Sources

- SRBRECR, SRRRSRC, SORLCUR, SORLFOS, SRPLEND, SMRPRLE, SPRIDEN

Residential Life



Content and Uses

Residential Life

Content

- Data includes demographic, address, academic history, room, phone and meal assignment.

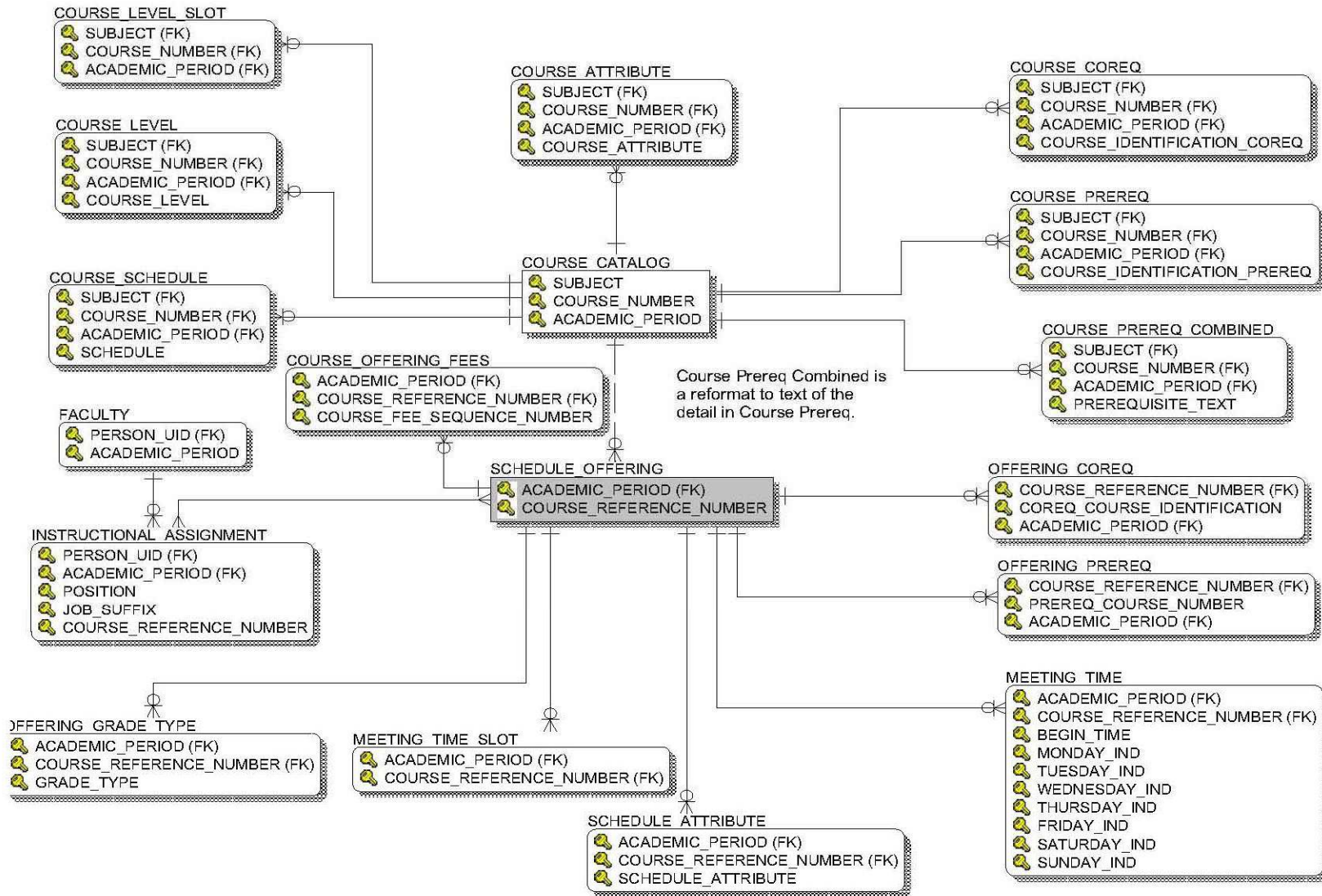
Uses

- Produce housing reports.

Primary Data Sources

- SPRIDEN, SPBPERS, GOBINTL, GOREMAL, SPRMEDI

Schedule Offering



Content and Uses

Schedule Offering

Content

- Data includes course information and section information - differs from Course Catalog in that it contains more detail on section offering, faculty information, meeting times.

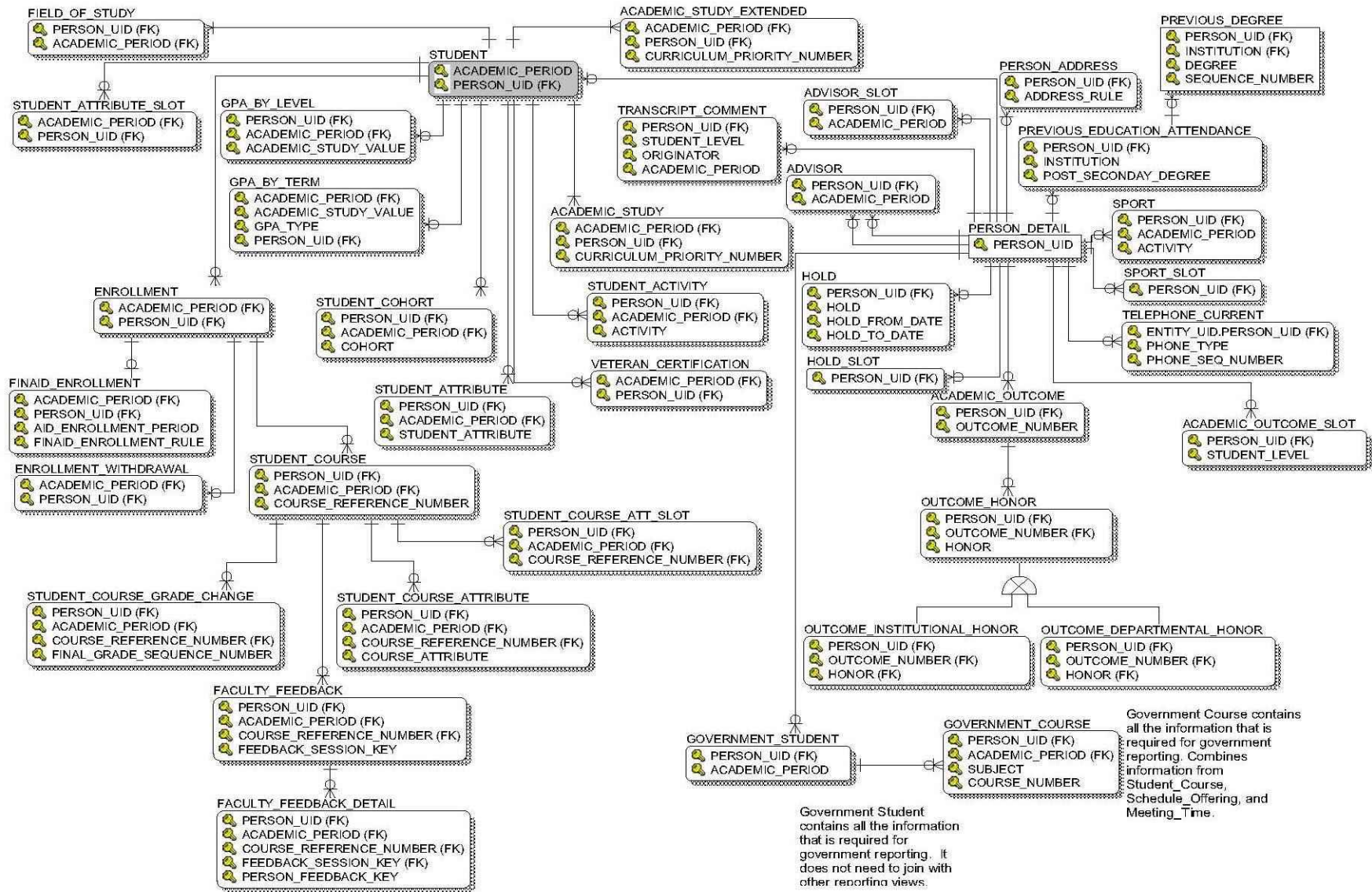
Uses

- Check course permissions.
- Monitor daily class size.
- Compile average grades by department
- List course schedule by day.

Primary Data Sources

- SSPSECT, SSBOVRR, SCBCRSE, SIRASGN, SPRIDEN, SSBSECT, SSBDESC, SSRSLYN

Student Detail



Content and Uses

Student Detail

Content

- Data includes demographic, address, holds, sports, advisor, student course registrations and financial aid enrollment, academic history, GPA, grade changes, student activity, outcomes, outcome honors, government student and course, cohorts and attributes. This is the most comprehensive of all the concepts.

Uses

- Monitor graduation applications.
- Report on international enrollments.
- Compile GPAs by department and subject.
- Summarize headcounts.

Primary Data Sources

- SGBSTDN, SFBETRM, SHRTTRM, SPBPERS, SPRIDEN, SGRVETN

Banner and Banner ODS

Making the Connection



The Meta Data

Composite views represent a composite (mixture) of the tables selected from Banner and allow for a single piece of data to be extracted row-by-row.

- All the business logic is included in the view itself.

Column names are generic.

- Term becomes Academic Period.
- PIDM becomes UID (unique ID).

Reporting views are divided into the various Banner systems.

- Accounts Receivable
- Common
- Finance
- Financial Aid
- Human Resources
- Student

The Meta Data

- Meta Data is information about the structure of the ODS data itself, such as the columns or fields in the data source, the format or the location of the data sources.
- Two perspectives are available
 - ODS Composite Views.
 - ODS Reporting Views (this is the view used most often).
- Some terminology
 - Target view – ODS reporting views that contain information from the related Banner tables.
 - Source Table – Tables from the Banner database.
 - Source Function – Functions that use data from Banner tables to create new data that is stored in the ODS.

Banner and Banner ODS

Making the Connection

Simple Steps

- Know the Banner form you need data from.
- Use dynamic help query to identify the table and field names.
- Use the Metadata to crosswalk from Banner to Banner ODS.
- Identify the Banner ODS views and fields needed.

Banner and Banner ODS

Dynamic Help Query from the Banner Form

The screenshot shows the Oracle Developer Forms Runtime interface for the Banner system. The main window title is "Oracle Developer Forms Runtime - Web: Open > SGASTDN". The menu bar includes "File", "Edit", "Options", "Block", "Item", "Record", "Query", "Tools", and "Help". The "Help" menu is open, showing options like "Online Help", "Dynamic Help Query", "Dynamic Help Edit", "Help (Item Properties)", "Show Keys", "List", "Display Error", "Display ID Image", "Calendar", "Calculator", "Extract Data with Key", "Extract Data No Key", "Technical Support", and "About Banner". A red arrow points to the "Dynamic Help Query" option. The form displays student information for "Herman, William" with ID "A00010483". The "Student Status" field is circled in red and shows "AS" (Active). Other fields include "New Term" (200920, Spring 2009), "Student Type" (Continuing), "Residence" (In state Resident), "Class" (FR, Freshman), and "Full or Part Time" (None). The "Curricula Summary - Primary" table is visible at the bottom.

Priority	Term	Program	Catalog	Level	Campus	College	Study Path:	Degree
1	200910	BA in Accounting	200910	Undergraduate		Business		Bachelor

End: Outcome Key: 1 Admission Type: Standard Admission: 200910 Matriculation:

Banner and Banner ODS

Locate the Table Name

The screenshot shows the Oracle Developer Forms Runtime interface for a student summary form. The main form displays student information for William Herman (ID: A00010483) in the Spring 2009 term. A help dialog box is open, showing the table name SGBSTDN highlighted in blue. A red arrow points to this table name. The dialog box also shows the field name SGBSTDN_STST_CODE and the option to display help.

General Learner

New Term: Spring 2009
Student Status: AS Active
Student Type: C Continuing
Residence: R In state Resident
Fee Assessment Rate:
Class: FR Freshman
Student Centric Cycle:
Full or Part Time: Full Time Part Time None

Curricula Summary - Primary

Priority	Term	Program	Catalog	Level	Campus	College	Study Path:	Degree
1	200910	BA in Accounting	200910	Undergraduate		Business		Bachelor of

End:
Outcome Key: 1 Admission Type: Standard Admission: 200910 Matriculation:

Banner and Banner ODS

Match the Table Name...

Source Reports:	
FUNCTION	SFBETRM
NA	SFRAREG
SABAUDF	SFRSTCA
SABSUPL	SFRSTCR
SARAATT	SFRTHST
SARADAP	SGBSTDN
SARAPPD	SGRADVR
SARCHKL	SGRCHRT
SARCHRT	SGRCOOP
SARRRAT	SGRDISA
SARRSRC	SGRSACT
SCBCRSE	SGRSATT
SCBDESC	SGRSPRT
SCBSUPP	SGRVETN
SCRATTR	SHBDIPL
SCRCORQ	SHRATTC
SCRGMOD	
SCRLEVL	
SCRRTST	
SCRSCHD	
SFBETRM	
SFRAREG	
SFRSTCA	
SFRSTCR	
SFRTHST	

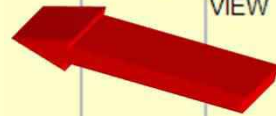


- ✓ In the web interface or via your reporting tool access the Meta Data
- ✓ Select the appropriate business area, e.g. Student
- ✓ Select the appropriate business reporting view
- ✓ Locate the Source Reports and select the table

Banner and Banner ODS

Locate the Field Name

		VIEW	<u>STUDENT_EXTENDED</u>	<u>ORIENTATION_SESSION</u>	
			<u>GOVERNMENT_STUDENT</u>	<u>ORIENTATION_SESSION</u>	
SGBSTDN_PIDM	NA	REPORTING VIEW	<u>ACADEMIC_STUDY</u>	<u>PERSON_UID</u>	NA
			<u>GOVERNMENT_FINANCIAL_AID</u>	<u>PERSON_UID</u>	
			<u>ACADEMIC_STUDY_EXTENDED</u>	<u>PERSON_UID</u>	
SGBSTDN_PREV_CODE	SGASTDN	REPORTING VIEW	<u>STUDENT</u>	<u>PROGRESS_EVALUATION</u>	NA
			<u>STUDENT_EXTENDED</u>	<u>PROGRESS_EVALUATION</u>	
SGBSTDN_RESID_CODE	SGASTDN	REPORTING VIEW	<u>GOVERNMENT_STUDENT</u>	<u>RESIDENCY</u>	NA
			<u>STUDENT_EXTENDED</u>	<u>RESIDENCY</u>	
SGBSTDN_SESS_CODE	SGASTDN	REPORTING VIEW	<u>ACADEMIC_STUDY</u>	<u>STUDENT_MEETING_TIME</u>	NA
			<u>ACADEMIC_STUDY_EXTENDED</u>	<u>STUDENT_MEETING_TIME</u>	
SGBSTDN_STST_CODE	SGASTDN	REPORTING VIEW	<u>ACADEMIC_STUDY</u>	<u>STUDENT_STATUS</u>	NA
			<u>ACADEMIC_STUDY_EXTENDED</u>	<u>STUDENT_STATUS</u>	
			<u>STUDENT</u>	<u>STUDENT_STATUS</u>	
			<u>STUDENT_EXTENDED</u>	<u>STUDENT_STATUS</u>	
SGBSTDN_TERM_CODE_ASTD	SGASTDN	REPORTING VIEW	<u>ACADEMIC_STUDY</u>	<u>ACADEMIC_STANDING_ACAD_PERIOD</u>	NA
			<u>ACADEMIC_STUDY_EXTENDED</u>	<u>ACADEMIC_STANDING_ACAD_PERIOD</u>	
SGBSTDN_TERM_CODE_CAST	SGASTDN	REPORTING VIEW	<u>STUDENT_EXTENDED</u>	<u>COMBINED_ACAD_STANDING_PERIOD</u>	NA
			<u>STUDENT</u>	<u>COMBINED_ACAD_STANDING_PERIOD</u>	



Banner and Banner ODS

Drill to the Target Report

STUDENT_LEVEL_DESC	Student level description.	VARCHAR2 (255)	FUNCTION	SORLSTP_GET_DESC
STUDENT_MEETING_TIME	Student's normal attendance time. May be either day, evening, weekend, etc.	VARCHAR2 (63)	SGBSTDN	SGBSTDN_SESS_CODE
STUDENT_MEETING_TIME_DESC	Student's meeting session description.	VARCHAR2 (255)	STVSESS	STVSESS_DESC
STUDENT_POPULATION	Student population or type for reporting. May include populations like new freshman, transfer, continuing, etc.	VARCHAR2 (63)	CALCULATION	NVL(SORLCUR_STYP_CODE,SGBSTDN_STYP_CODE)
STUDENT_POPULATION_DESC	Student population or type description.	VARCHAR2 (255)	STVSTYP	STVSTYP_DESC
STUDENT_RATE	Identifies any specific assessment rate to be used to determine the charges for this student.	VARCHAR2 (63)	CALCULATION	NVL(SORLCUR_RATE_CODE,SGBSTDN_RATE_CODE)
STUDENT_RATE_DESC	Description for the rate code.	VARCHAR2 (255)	STVRATE	STVRATE_DESC
STUDENT_STATUS	Student's current status for the academic period. May include active and permitted to register, inactive and stop registration, graduated, etc.	VARCHAR2 (63)	SGBSTDN	SGBSTDN_STST_CODE
STUDENT_STATUS_DESC	Student's status description.	VARCHAR2 (255)	STVSTST	STVSTST_DESC
SUB_ACADEMIC_PERIOD	A session, portion or part of the academic period.	VARCHAR2 (63)	NA	NA
SUB_ACADEMIC_PERIOD_ADMITTED	Session or part of the academic period associated with the information on the academic study information record.	VARCHAR2 (63)	NA	NA
SUB_ACADEMIC_PERIOD_ADMIT_DESC	Description of the session or part of the academic period associated	VARCHAR2 (255)	NA	NA



Display Rules



Banner ODS Concepts

Display Rules

- Enable you to control and customize how data is:
 - Stored in the Banner ODS composite tables.
 - Displayed in certain Banner ODS Reporting Views.
 - Example – test scores or address types.
- Determine the positional location of data in a view or the hierarchical order in which a particular type of data should be retrieved.
 - “Positional” display rules are required for many of the Slotted views.
 - “Hierarchical” display rules are required for a sub-set of Reporting views.
- In most cases the query must be ‘filtered’ by a RULE in order to avoid Cartesian-effect results.

Display Rules

Admissions/Recruitment

Internal Group	Internal Code	Rule Definition	Used In: (Slotted Table or View)
ADDRESS	ADMSADDR GEOGADDR (GO addresses) RECRADDR	1: MA 2: GO 3: PR 1: GO 1: MA 2: GO 3: PR	Address By Rule, Person Address
CHECKLIST	ADMSCHKL	1: 0001 2: 0002 3: 0004 4: 0006 5: 0010 6: 0018 7: 0019	Requirement Slot
CONTACTS	ADMSCTYP RECRCTYP	1: CN1 2: ACT 3: AC1 4: AC2 5: FIN 1: CN1 2: SAT 3: SA1 4: SA2 5: FIN	Contact Slot
INTERESTS	ADMSINTS RECRINTS	(not used at SOU) (not used at SOU)	Interest Slot
MAIL	RECRLETR	(not used at SOU)	Communication Slot
SOURCE	ADMSSRCE RECRSRCE	(not used at SOU) (not used at SOU)	Admissions Source Slot Recruitment Source Slot
TEST	ADMSTEST Note: Can be any value to add additional rules.	1: MAXC 2: MAXS 3: MAXA 4: SATM 5: SATV 6: SATW 7: GED	Test Slot

Display Rules

Residence Life

Internal Group	Internal Code	Rule Definition	Used In: (Slotted Table or View)
ADDRESS	RESDADDR	1: MA 2: PR	Address By Rule, Person Address
HOLDS	RESDHOLD	RL	Hold Slot

Display Rules

Student

Internal Group	Internal Code	Rule Definition	Used In: (Slotted Table or View)
ADDRESS	ENRLADDR DIPLADDR FACLADDR HISTADDR STDNADDR	1: MA 2: PR 3: BI 4: PA 5: GO 1: DI 1: BU 2: PY 1: MA 2: PR 1: PR 2: MA 3: BI 4: PA 5: GO	Address By Rule, Person Address
ATTRIBUTES	CRSEATTR FACLATTR HISTATTR	1: USRD 2: USRE 3: USRF 4: USRG 5: USRH (not used at SOU) 1: USRD 2: USRE 3: USRF 4: USRG 5: USRH	Course Attribute Slot Faculty Attribute Slot Student Course Attribute Slot
COHORT	STDNCHRT	1: FALL14FR 2: FALL13FR 3: FALL12FR	Student Cohort Slot
FACULTY ASSIGNMENTS	FACLNIST	(not used at SOU)	Non-instructional Assignment Slot

Display Rules

Student (continued)

Internal Group	Internal Code	Rule Definition	Used In: (Slotted Table or View)
FTE_DIVISOR	9410UGFR (cohort group)	12	Used in Enrollment and Cohort
HOLDS	STDNHOLD	(not defined)	Hold Slot
MEDICAL	STDNMEDI	1: MI 2: ME 3: RE	Medical Information Slot
SCHEDULE TYPE	CRSESCHD	1: A 2: B 3: C 4: D	Course Schedule Slot
SPORT	STDNSPRT	(not defined)	Sport Slot
STUDENT ATTRIBUTE	STDNATTR SVARATTR TRIOATTR	(not defined) 1: ASP2 2: REGP 3: AQRS 4: ADFS 5: DAP 6: DFLY 1: ASP1 2: ASP2 3: ASPG 4: DFL 5: ASPN	Student Attribute Slot

Display Rules

Student (continued)

Internal Group	Internal Code	Rule Definition	Used In: (Slotted Table or View)
TEST	ACTC	1: ACTC	Test Slot
	ADMSTEST	1: MAXC 2: MAXS 3: MAXA 4: SATM 5: SATV 6: SATW 7: GED	
	FAPLTEST	1: SATM 2: SATV 3: ACTC	
	FRCHTEST	1: FRPL 2: FRL1 3: FRL2 4: FRL3 5: FRL4 6: FRL5	
	GERMTEST	1: GMPL 2: GML1 3: GML2 4: GML3 5: GML4 6: GML5	
	GRADTEST	1: GREA 2: GREQ 3: GREV 4: GMAT	
	INTLTEST	1: IELT 2: TOEF 3: TOEC 4: TOEI	
	MATHTEST	1: EA 2: CLM 3: ML 4: MOL 5: MTL	
	PLMTTEST	1: EA 2: CLM 3: SPPL 4: FRPL 5: GMPL	
	SATM	1: SATM	
	SATV	1: SATV	
	SPANTEST	1: SPPL 2: SPAN	
	SPLVTEST	1: SPL1 2: SPL2 3: SPL3 4: SPL4 5: SPL5 6: SPL6 7: SPL7	
	TRIOTEST	1: SATV 2: SATM 3: SATW 4: CLM 5: ML 6: MTL 7: GED	

Reporting and Slotted Views



Reporting and Slotted Views

Reporting Views

- Includes the main data that is extracted from source system and stored in Banner ODS.

Slotted Views

- Stores data values for a specific code related to a base reporting view.
- Optimizes the speed of queries.
- Population is often controlled by Display Rules the Institution defines.

Reporting and Slotted Views

Common (61)

Activity

Address

Address_By_Rule

Address_Current

Address_Preferred

Calendar_Date_Hierarchy

Certification

Certification_Slot

Combined_Academic_Outcome

Communication (Mailing)

Communication_Slot

Contact

Contact_Slot

Current_Employment

Cross_Reference_Slot

Employment_History

Event

Event_Invitee

Geographic_Region

Geographic_Region_Institution

Hold

Hold_Slot

Institution

Institution_Characteristic

Inst_Characteristic_Slot

Institution_Demographic

Interest

Interest_Slot

Internet_Address

Internet_Address_Current

Reporting and Slotted Views

Common (61)

Mail	Person_Sensitive_Race_Slot
Mail_Slot	Person_Veteran
Medical_Information	Previous_Degree
Medical_Information_Slot	Previous_Education
Organization_Entity	Previous_Education_Slot
Organization_Entity_Address	Previous_Education_Attendance
Past_Employment_Slot	Relationship
Person	Salutation
Person_Address	Secondary_School_Subject
Person_Detail	Skill
Person International	Skill_Slot
Person_Sensitive	Telephone
Person_Sensitive_Race	

Reporting and Slotted Views

Common (61)

Test

Test_Slot

Validation

Visa

Visa_Current

Year_Type_Definition

Reporting and Slotted Views

Student (82)

Academic_History_Event

Academic_Outcome

Academic_Outcome_Slot

Academic_Study

Academic_Study_Extended

Administrator

Admissions_Application

Admissions_Attribute

Admissions_Cohort

Admissions_Decision

Admissions_Decision_Slot

Admissions_Rating

Admissions_Requirement

Admissions_Source

Admissions_Source_Slot

Advisor

Advisor_Slot

Course_Attribute

Course_Att_Slot

Course_Catalog

Course_Coreq

Course_Level

Course_Level_Slot

Course_Offering_Fees

Course_Prereq

Course_Prereq_Combined

Course_Schedule

Reporting and Slotted Views

Student (82)

Course_Schedule_Slot
Enrollment
Faculty
Faculty_Attribute
Faculty_Att_Slot
Faculty_Department_College
Field_of_Study
Government_Academic_Outcome
Government_Admissions
Government_Course
Government_Student
GPA
GPA_By_Level
GPA_By_Term

Instructional_Assignment
Instruct_Assign_Slot
Meal_Assignment
Meeting_Time
Meeting_Time_Slot
Noninstruct_Assign_Slot
Non_Instructional_Assignment
Offering_Coreq
Offering_Grade_Type
Offering_Prereq
Outcome_Departmental_Honor
Outcome_Honor
Outcome_Institutional_Honor

Reporting and Slotted Views

Student (82)

Phone_Assignment

Pre_Student

Recruitment_Attribute

Recruitment_Cohort

Recruitment_Information

Recruitment_Learned

Recruitment_Source

Recruitment_Source_Slot

Requirement_Slot

Room_Assignment

Schedule_Attribute

Schedule_Offering

Sport

Sport_Slot

Student

Student_Activity

Student_Attribute

Student_Cohort

Student_Cohort_Slot

Student_Course

Student_Course_Attribute

Student_Course_Att_Slot

Student_Course_Grade_Change

Student_Course_Reg_Audit

Student_Extended

Student_Work_Experience

Transcript_Comment

Questions

Banner ODS Documentation

- <http://www.sou.edu/it/banner/index-banner-ods.html>

Contact the Helpdesk

- Send an email to data-warehouse-support@sou.edu

Glossary



Glossary

Attribute

A building block of information within a view. Many attributes in a view come directly from fields in the source database (Banner). Other attributes are derived either through calculations or the logic defined in a function.

Banner Enterprise Data Warehouse (Banner EDW)

An informational database that enables an institution to keep “time slices” of data over time, over history, stored for easy retrieval and comparison. The Enterprise Data Warehouse is an extension of the Operational Data Store, which is the primary source of aggregated and detailed data.

Banner Operational Data Store (Banner ODS)

The primary source of aggregated and detailed data is comprised of over 300 reporting views containing data across subject areas applicable to higher education. Because of the size and scope of the Banner ODS data model, reporting views are grouped into logical “business concepts” to better illustrate the various business uses. The data models are grouped into the following sections : Accounts Receivable, Common, Finance, Financial Aid, Human Resources and Student.

Glossary (cont.)

Dimension

A structural attribute of data that consists of pieces of information of a similar type. A Geography dimension, for example, may contain data about regions, countries, cities, states. A time dimension contains year, month, day and hour members. A multidimensional data structure allows data to be organized and analyzed in a concise, efficient way.

Facts/Measures

Numbers that are related to the attributes. Facts and measures (the terms are synonymous) generally represent counts, sums or percentages and other ratios. They may be stored and retrieved or calculated from stored measures as the query is executed.

Filter

A filter is used to defined or restrict the data that is shown on a report.

Glossary (cont.)

Incremental Refresh

Data in the Banner ODS is updated, or refreshed, at predetermined intervals of time. Only the data that has changed in the source database (Banner) since the last refresh is updated.

List of Values

A list of values is a set of valid values (codes) for a column in a reporting view. A List of Values generally includes the description along with the code.

ODS Business Concepts

Business concepts are used to organize the data available for different reporting requirements. A business concept shows the relationships between the data supporting a set of business processes. Because different business processes often require different perspectives on data, the relationships among the supporting database objects need to change based on the analysis being performed.

ODS Composite View Meta Data

The composite views gather Banner source data necessary to populate and maintain the information stored in the Banner ODS.

Glossary (cont.)

ODS Reporting View Meta Data

Meta data in Banner ODS tells what data columns are in Banner ODS , a definition of their business use, the type of data (number, character, date, etc.), how long they are, where they come from (in the source system) and their destination (in the target system.)

Package

A package is a subset of data in Cognos designed to support a specific set of reporting needs. They are used by Report Studio to access data for the reports being built. Within the various Cognos tools you can report against only one package at a time. When creating a new report, you are prompted to select which package to use.

Prompts

A prompt is used to create a list of values that can be selected from. The report will be built (or filtered) based on the prompts selected.

Glossary (cont.)

Slotted View

Slotted views group similar information in one row instead of multiple rows to make reporting simpler. An example could be Student holds. Instead of having separate rows for each hold a student has, there would be one row with up to 5 holds in separate fields. Which holds show in the slotted view is based on Display Rules that are defined by the Institution. The number of slots in different slotted view varies.

Source Function

Functions that use data from the Banner tables to create new data that is stored in the Banner ODS.

Source Table

Tables from the Banner database where the data is coming from.

Target View

Banner ODS reporting views that contain information from the related Banner tables.